



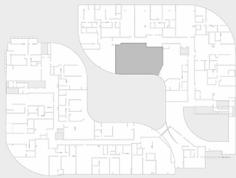
POTARO GARDENS BY TRICAN

## OPULENT UNIT 2 BEDROOM

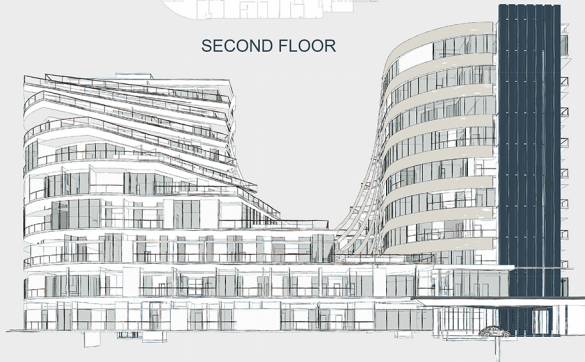
INTERIOR: 1,493 SQ.FT..

EXTERIOR, 158 SQUARE FEET

TOTAL: 1,651 SQ.FT.



SECOND FLOOR



# B2.07

Designed By HD STUDIO INC. in  
Guyana.